

# Where To Turn

**2023 - 2024**

**An information and referral  
guide to community resources  
for older adults**

## **KITSAP COUNTY**

Produced by  
**SENIOR MEDIA SERVICES**  
A program of



LUTHERAN  
**Community  
Services**  
NORTHWEST

**Find the services you need  
for Transportation, Housing,  
Healthcare, Food and Utilities  
Assistance, and more**



# Get the caregiving support you need, when you need it.

At AARP Family Caregiving, we're here to help you get answers, connect with other caregivers and find local resources close to home. So you can take care of what matters most. **To learn more, visit [aarp.org/caregiverswa](https://aarp.org/caregiverswa)**

 [facebook.com/AARPWA](https://facebook.com/AARPWA)

 [@AARPWA](https://twitter.com/AARPWA)



## **CATEGORIES OF SERVICE**

ADULT DAY HEALTH .....	6
ADVOCACY and COMPLAINTS .....	6
CHEMICAL DEPENDENCY .....	6
CRIME AND FRAUD PREVENTION .....	6
DEMENTIA CARE/SERVICES .....	6
DENTAL CARE .....	7
DISASTER/EMERGENCY SERVICES .....	7
DISABILITY-RELATED SERVICES .....	7
DOMESTIC VIOLENCE .....	8
DRIVING CLASSES .....	8
EMPLOYMENT .....	8
FOOD BANKS / FOOD ASSISTANCE .....	8
FUNERALS .....	8
HEALTHCARE / HOSPITALS .....	8
HEARING .....	8
HOSPICE .....	9
HOUSING ASSISTANCE / HOUSING REPAIRS .....	9
IMMIGRATION SERVICES .....	10
IN-HOME CARE / HEALTH SERVICES .....	10
LEGAL ASSISTANCE .....	10
LEGISLATION / STATE .....	10
LONG-TERM CARE .....	10
MEDICARE / HEALTH INSURANCE .....	10
MENTAL HEALTH / SUICIDE PREVENTION .....	10
MINORITY SERVICES .....	11
SENIOR / COMMUNITY CENTERS .....	11
SENIOR LIVING COMMUNITIES .....	12
SOCIAL SECURITY .....	12
SUPPORT GROUPS / ASSOCIATIONS .....	12
TAX HELP / INFORMATION .....	12
TRANSPORTATION .....	13
UTILITIES ASSISTANCE .....	13
VETERANS / MILITARY .....	13
VOLUNTEERING .....	14

## ADVERTISING PARTNERS

### Caregiver support

AARP Washington ..... 2

### Funeral planning

ShareLife ..... 16

### Human services

Kitsap County Aging and Long-term Care ..... 12

Lutheran Community Services Northwest ..... 15

### Military support

Lutheran Community Services Northwest ..... 15

### Senior living communities

Norpoint Communities ..... 11

### Volunteerism

Retired Senior Volunteer Program..... 9

## ABOUT THE PUBLISHER

**Senior Media Services** is a program of Lutheran Community Services Northwest (LCSNW), a non-profit human services agency. The goal of all LCSNW programs is to meet the specific needs of local communities. Senior Media Services, which is based in Tacoma, serves the information needs of tens of thousands of older adults in multiple counties with free print publications (Where to Turn and Senior Scene) and online ([seniorscene.org](http://seniorscene.org)).

Where to Turn, published annually, is a resource guide used by seniors, their families, friends and caregivers to find community services provided by government and private providers. Separate editions of Where to Turn are published for Kitsap County, Pierce County and King County and are distributed free of charge through more than 200 partnering organizations.

Senior Scene, a monthly newspaper, is distributed free at more than 380 locations in Pierce County and King County. Readers enjoy news, features and information aimed at helping them lead healthy, active, informed and meaningful lives.

Information about Senior Media Services is at 253-722-5687 and [seniorscene.org](http://seniorscene.org).

## FIND IT IN WHERE TO TURN

**Where To Turn** lists the telephone numbers of service providers by category. The lists include government, publicly funded and non-profit programs, and paid advertisers. For services outside Washington, contact the U.S. Administration on Aging's Eldercare Locator at 1-800-677-1116.

### ABOUT LUTHERAN COMMUNITY SERVICES NORTHWEST

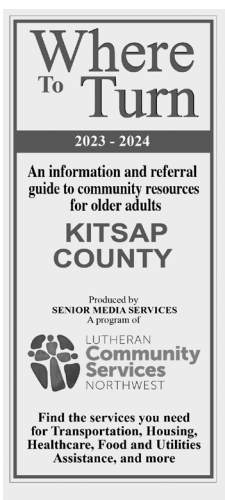
Lutheran Community Services Northwest (LCSNW) is a non-profit human services agency with offices and programs in Washington, Oregon and Idaho. Its origins date to 1921, and its services--focused on health, justice and hope for individuals, families and communities--touch the lives of people of all ages, cultures and faiths. In Kitsap County, programs include:

- Senior Companion matches trained volunteers with isolated seniors and disabled adults for companionship such as playing games, sharing hobbies, going for walks, and transportation for short errands or medical appointments. [seniorcompanion@lcsnw.org](mailto:seniorcompanion@lcsnw.org), 253-722-5686.
- Retired and Senior Volunteer Program (RSVP), part of the AmeriCorps Seniors, helps older volunteers find roles that fit their specific skills and interests. More information is at [RSVPkitsapcounty@lcsnw.org](mailto:RSVPkitsapcounty@lcsnw.org) and 253-722-5695.
- Navy Family Respite Care helps military families enrolled in Child Care Aware of America EFM Respite care program. The program offers 40 hours per month

of no-cost respite care for children with special needs, allowing parents to attend appointments or rest. More information is at 800-424-2246, [lcsnw.org](http://lcsnw.org) or 360-479-3489

- Where to Turn community resources guide, published by Senior Media Services.

For additional copies of **Where To Turn** please contact Senior Media Services at 253-722-5687 or [pjenkins@lcsnw.org](mailto:pjenkins@lcsnw.org)



## **ADULT DAY CARE**

Caregiver Support Center .....	360-337-5700
Gateway Adult Services .....	360-377-9810

## **ADVOCACY and COMPLAINTS**

Adult Protective Services/DSHS .....	877-734-6277
Better Business Bureau .....	206-431-2222
Disability Rights Washington .....	800-562-2702
DSHS Residential Care Services .....	253-983-3819
Kitsap County Long-term Care Ombudsman .....	360-337-5714
State Attorney General Consumer Protection .....	800-551-4636
State Insurance Commissioner .....	800-562-6900

## **CHEMICAL DEPENDENCY**

Al-Anon .....	888-425-2666
Alcoholics Anonymous .....	253-474-8897
Kitsap Recovery Center .....	360-337-4625

## **CRIME and FRAUD PROTECTION**

AARP Fraud Watch Network Help Line .....	877-908-3360
Bainbridge Island Police .....	206-842-5211
Bremerton Police .....	360-473-5220
Crimestoppers of Puget Sound .....	800-222-TIPS
Kitsap County Sheriff .....	360-337-7101
Port Orchard Police .....	360-876-1700

## **DEMENTIA CARE/ SERVICES**

Alzheimer's Association .....	800-272-3900
Kitsap County Senior Information and Assistance .....	360-337-5700
Lutheran Community Services Northwest .....	253-722-5682
UW Alzheimer's Disease Research Center .....	206-744-0588

## DENTAL CARE

Peninsula Community

Health Services ..... 360-377-3776

## DISASTER/EMERGENCY SERVICES

American Red Cross ..... 253-474-0400

FEMA (Federal Emergency

Management Agency) ..... 800-525-0321

Kitsap County Department of Emergency

Management ..... 360-307-5871

Salvation Army ..... 360-373-5550

## DISABILITY-RELATED SERVICES

Disabled American Veterans ..... 360-373-2397

DSHS ..... 1-800-772-1213

Kitsap County Division of Aging and

Long-Term Care ..... 360-337-5700

Northwest Access Fund ..... 206-328-5116

Northwest ADA Center ..... 800-949-4232

Washington Talking Book and

Braille Library ..... 206-615-0400



**HELP WITH UTILITIES:** Low-income Kitsap County residents can get help paying for utilities, including water, from local and state organizations. See the Utilities Assistance category of services in Where to Turn.

## **DOMESTIC VIOLENCE**

Adult Protective Services/DSHS .... 877-734-6277  
National Domestic Violence Hotline... 800-799-7233  
YWCA Kitsap  
County ... 360-479-0522, 800-500-5513 (crisis line)

## **DRIVING CLASSES**

AARP Driver Safety ..... 888-227-7669  
AAA Roadwise..... 877-476-1254

## **EMPLOYMENT**

AARP Foundation Senior Community Service  
Employment Program .....1-855-850-2525  
Worksource ..... 360-902-9500  
Senior Community Service  
Employment Program ..... 206-624-6698

## **FOOD BANKS / FOOD ASSISTANCE**

Bainbridge Island Helpline House .... 206-842-7621  
Bremerton Food Line ..... 360-479-6188  
Central Kitsap Food Bank ..... 360-692-9818  
DSHS Home and Community Services ... 360-842-2112  
Fishline ..... 360-779-5190  
Meals on Wheels Kitsap ..... 360-377-8511  
Salvation Army ..... 360-373-5550  
South Kitsap Helpline ..... 360-876-4089  
St. Vincent de Paul ..... 360-377-2929

## **FUNERALS**

Share Life / Edwards Memorial  
Funeral Home ..... 253-566-1008

## **HEALTHCARE / HOSPITALS**

St. Michael Medical Center:  
Bremerton and Port Orchard ..... 360-744-3911  
    Poulsbo ..... 360-598-7500  
    Silverdale ..... 360-744-8800  
Kitsap County Medical Society  
physician referrals ..... 866-844-9355  
Kitsap Public Health District ..... 360-728-2235



Naval Hospital Bremerton ..... 360-475-4000  
 Peninsula Community  
 Health Services ..... 360-377-3776

## HEARING

Hearing, Speech and Deafness Center ...206-323-5770

## HOSPICE

CHI Franciscan ..... 1-866-969-7028  
 Kaiser Permanente Home Health and  
 Hospice ..... 206-326-4530

## HOUSING ASSISTANCE / HOUSING REPAIRS

Bremerton Housing Authority ..... 360-479-3694  
 Housing Kitsap ..... 360-535-6100  
 Housing Resources Bainbridge ..... 206-842-1909  
 Kitsap Community Resources ..... 360-473-2035  
 VA Supportive Housing ..... 253-582-8440  
 Washington State Housing Finance  
 Commission ..... 206-464-7139

## Join the Retired & Senior Volunteer Program (RSVP) in Pierce & Kitsap Counties

Are you 55 years of age or older, have a few hours a week to give, and enjoy working with the community? We have several new volunteer opportunities at a variety of local nonprofit organizations.

### Contact us to learn more about RSVP:

**Email:** [RSVPpiercecounty@lcsnw.org](mailto:RSVPpiercecounty@lcsnw.org)  
[RSVPkitsapcounty@lcsnw.org](mailto:RSVPkitsapcounty@lcsnw.org)

**Phone:** Nancy McFarland  
 RSVP Program Director, 253-722-5695

**Website:** [lcsnw.org](http://lcsnw.org)



**AmeriCorps  
Seniors**



**LUTHERAN  
Community  
Services  
NORTHWEST**

## **IMMIGRATION SERVICES**

Kitsap Immigrant Assistance Center .. 360-616-0479  
U.S. Immigration and  
Naturalization ..... 800-375-5283

## **IN-HOME CARE/HEALTH SERVICES**

Catholic Community Services ..... 877-870-1582  
Korean Women's Association ..... 360-479-1707  
Lutheran Community Services  
Northwest ..... 360-377-5511, 253-722-5680

## **LEGAL ASSISTANCE**

Kitsap County Bar Association ..... 253-682-3135  
Kitsap Legal Services ..... 360-479-6125

## **LEGISLATION / STATE**

Senior Citizens Lobby ..... 360-754-0207  
Washington Legislature Hotline ..... 800-562-6000

## **LONG-TERM CARE**

Kitsap County Division of Aging  
and Long-Term Care ..... 360-337-5700  
Long Term Care Ombudsman ..... 360-337-5714

## **MEDICARE / HEALTH INSURANCE**

Medicare ..... 1-800-633-4227  
Medicare beneficiary helpline ..... 800-633-4227  
Medicare/Medicaid Fraud ..... 800-447-8477  
SHIBA (Statewide Health Insurance Benefits  
Advisors) ..... 360-475-3095, 800-562-6900

## **MENTAL HEALTH / SUICIDE PREVENTION**

Kitsap Mental Health Services ..... 360-373-5031  
Kitsap Suicide Prevention Task Force .. 360-337-5279  
NAMI (National Alliance on Mental Illness) .. 206-783-4288  
National Suicide Prevention Lifeline ... 1-800-273-8255  
Peninsula Community Health Services ... 360-377-3776  
Volunteers of America Western Washington  
Crisis Line ..... 888-910-0416

## MINORITY SERVICES

Korean Women's Association .....	253-535-4202
Office of Minority Affairs and Diversity ...	206-543-7132
Port Gamble S'Klallam Tribe .....	360-297-2646
Suquamish Tribe .....	360-598-3311

## SENIOR / COMMUNITY CENTERS

Bainbridge Island Senior Center .....	206-842-1616
Bremerton Family YMCA .....	360-377-3741
Bremerton Senior Recreation Center ...	360-473-5357
Givens Community Center (Port Orchard) .....	360-337-5777
Haselwood Family YMCA (Silverdale) .....	360-698-9622
North Kitsap Senior Center .....	360-779-5702
Port Gamble S'Klallam Tribe Senior Center .....	360-297-9630
Suquamish Tribe Elders Lodge .....	360-598-6883
Village Green Community Center (Kingston) .....	360-297-1263

## SENIOR LIVING COMMUNITIES

Norpoint Communities .....	360-633-1800
----------------------------	--------------

## SOCIAL SECURITY

Social Security Administration .....	800-772-1213
Bremerton office .....	1-855-820-0098

**NOW OPEN!**  
Charming 55+ community in *Silverdale*





*Retire Here!*  
Single-level cottages with  
attached garages. For  
rent! No buy-in. Reserve  
today: (360) 633-1800  
[www.norpoint.com](http://www.norpoint.com)

# SUPPORT GROUPS/ ASSOCIATIONS

Alzheimer's Association .....	800-272-3900
Brain Injury Alliance of Washington ...	1-877-824-1766
Kitsap County Caregiver Support Center .....	360-337-5700
Northwest Parkinson's Foundation ...	877-980-7500
Widowed Information and Consultation Services (WICS) .....	206-241-5650

## TAX HELP/INFORMATION

AARP Tax-Aide .....	888-227-7669
IRS .....	800-829-1040
Kitsap County assessor .....	360-337-7160
Volunteer Income Tax Assistance ...	800-906-9887



**KITSAP COUNTY AGING  
& LONG TERM CARE**

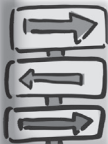
**KITSAP COUNTY'S  
AREA AGENCY ON AGING**

USAging

## SENIOR INFORMATION & ASSISTANCE

*A FREE Service for People 60+ & Their Caregivers*

### Where to turn in Kitsap County for...



- Answers to questions about services and opportunities
- Review of needs and referral to local resources
- Help finding and applying for programs and services
- Advocacy on issues important to older adults

*Promoting the well-being of older adults &  
assisting them in maintaining their independence*

**360-337-5700 or 1-800-562-6418**

[www.agingkitsap.com](http://www.agingkitsap.com)    [www.waclc.org](http://www.waclc.org)

## CAREGIVER SUPPORT CENTER

**Support for you in your unpaid role of  
helping an adult family member or friend**

### FREE:

- Personal Caregiver Consultation
- Information & Education
- Specialized Services



**Caregiver  
Support  
Center**

**Kitsap County Aging & Long Term Care Services**

### ASK ABOUT:

- Dementia Resources
- Support & Training
- Caregiver Respite

**Offices in North, Central, and South Kitsap County**

*for in-office help, call ahead for staff availability*

**360-337-5700 or 1-800-562-6418**

[www.agingkitsap.com](http://www.agingkitsap.com)

[www.waclc.org](http://www.waclc.org)

## TRANSPORTATION

Amtrak .....	800-872-7245
Catholic Community Services volunteer transportation .....	253-502-2708
Kitsap Transit .....	800-501-7433, 360-377-2877
Paratransit Services .....	360-377-7007
State ferries .....	800-843-3779

## UTILITIES ASSISTANCE

Federal Lifeline Telephone Program ..	888-641-8722
Kitsap Community Resources .....	360-377-0053
Kitsap County Public Utility District ...	360-779-7656
Salvation Army .....	360-373-5550
Washington Utilities and Transportation Commission .....	360-664-1160

## VETERANS / MILITARY

American Legion	
• Post 149 Bremerton .....	360-373-8983
• Post 30 Port Orchard .....	360-908-7319
Disabled American Veterans .....	360-373-2397
Fleet Reserve Association .....	360-373-2296
Kitsap Community Resources .....	360-377-0053
Kitsap County Veterans Assistance ...	360-337-4811
Marine Corps League .....	360-695-7233
Military Family Respite Care .....	360-479-3489
Navy League .....	360-479-1233
U.S. Veterans Affairs .....	360-782-9900
VFW Post 239 Bremerton .....	360-377-6739
Washington Department of Veterans Affairs .....	800-562-2308
Washington Veterans Home - Port Orchard .....	360-895-4700

## VOLUNTEERING

AARP Tax-Aide .....	888-227-7669
Citizens on Patrol/Kitsap County Sheriff .....	360-337-4650
Kitsap County Parks .....	360-337-5350
Kitsap County Volunteer Services ...	360-337-5777
Retired and Senior Volunteer Program (RSVP) .....	360-377-5511
Meals on Wheels Kitsap .....	360-377-8511

**VOLUNTEERING CON'T**

United Way of Kitsap County .....	360-377-8505
Meals on Wheels (Lutheran Community Services) .....	253-722-5684
MultiCare Hospice .....	253-301-6464
Retired and Senior Volunteer Program (RSVP) .....	253-722-5695
Senior Companion Program .....	253-722-5686
Senior Media Services (Senior Scene newspaper delivery) .....	253-722-5687
Service Corps of Retired Executives (SCORE) .....	253-680-7770
SHIBA Helpline (Statewide Health (Insurance Benefit Advisors) ... 253) 596-0918, 800-562-6900	
St. Anthony Hospital .....	253-530-2000
St. Joseph Medical Center .....	253-426-4101
St. Michael Medical Center .....	564-240-3078
Tacoma Area Coalition of Individuals with Disabilities (TACID) .....	253-565-9000
Volunteer Chore Services .....	253-502-2741



**TRANSPORTATION:** Kitsap Transit Access offers door-to-door transportation for elderly and disabled riders. Information: 360-377-2877, 800-501-7433, and kitsaptransit.com.

*Home is where the HEART is*

*But sometimes  
you need  
a helping hand*



**Retired and Senior  
Volunteer Program  
253-722-5695**



**Military Family  
Respite Care  
360-479-3489**



**Senior Companion  
253-722-5686**



**Where to Turn /  
Senior Media Services  
253-722-5687**

[www.lcsnw.org](http://www.lcsnw.org)



LUTHERAN  
**Community  
Services**  
NORTHWEST





ShareLife®

# Every life is unique – shouldn't every funeral be, too?

ShareLife is more than just a funeral. It's a unique, complete approach to funeral planning that honors and celebrates the life of your loved one. Plan a personalized, memorable life celebration service with a ShareLife provider near you.

The ShareLife experience doesn't have to be expensive. Our providers in Washington have **options to fit every budget**. Call today to learn more!

## Tacoma • Federal Way

**Edwards Memorial Funeral Home**  
(253) 566-1008 [EdwardsMemorial.com](http://EdwardsMemorial.com)

## Auburn • Kent

**Klontz Funeral Home & Cremation Services**  
(253) 833-1322 [KlontzFuneralHome.com](http://KlontzFuneralHome.com)

## Sumner • Puyallup

**Curnow Funeral Home & Cremation Services**  
(253) 863-2800 [CurnowFuneralHome.com](http://CurnowFuneralHome.com)